

 *texi*®



Ballerina

texi Ballerina



Computerized sewing machine, 200 stitch programs

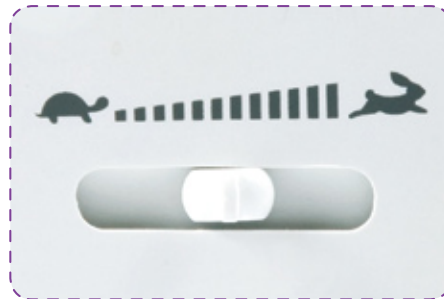
001	002	003	004	005	006	007	008	009	010	011	012	013	014	015	016	017	018	019	020	021	022	023	024	025	
026	027	028	029	030	031	032	033	034	035	036	037	038	039	040	041	042	043	044	045	046	047	048	049	050	
051	052	053	054	055	056	057	058	059	060	061	062	063	064	065	066	067	068	069	070	071	072	073	074	075	
076	077	078	079	080	081	082	083	084	085	086	087	088	089	090	091	092	093	094	095	096	097	098	099	100	
101	102	103	104	105	106	107	108	109	110	111	112	113	114	115	116	117	118	119	120	121	122	123	124	125	
126	127	128	129	130	131	132	133	134	135	136	137	138	139	140	141	142	143	144	145	146	147	148	149	150	
151	152	153	154	155	156	157	158	159	160	161	162	163	164	165	166	167	168	169	170	171	172	173	174	175	
U	V	W	X	Y	Z	A	B	C	D	E	F	G	H	I	J	K	L	M	N	O	P	Q	R	S	T
176	177	178	179	180	181	182	183	184	185	186	187	188	189	190	191	192	193	194	195	196	197	198	199	200	
p	q	r	s	t	u	v	w	x	y	z	[/	.	-	0	1	2	3	4	5	6	7	8	9	

Main functions:

- 200 stitch programs (including 8 types of automatic buttonhole, straight, zig-zag, overlock and decorative stitches)
- alphabet font
- smooth regulation of stitch length (max 5 mm) and width (max 7 mm)
- automatic bartacking
- backwards sewing
- maximum sewing speed 750 s.p.m
- electronic sewing speed regulation
- LCD guide screen
- CL button - pattern clear/erase function
- ME button - pattern memory function
- MI button - mirror stitches
- RE button - pattern repeating
- Start/Stop button
- slow Start button
- needle positioning (top/bottom)
- sewing "stitch by stitch"
- automatic needle threader
- adjustable presser foot pressure
- drop feed lever
- snap-on feet - MATIC SYSTEM
- free arm for circular sewing
- LED lamp
- thread cutter
- rotary hook
- metal components

Equipped with:

- standard foot
- overlock foot
- zipper foot
- blind stitch foot
- buttonhole foot
- satin foot (for decorative stitches)
- 4 bobbins
- needle set
- seam ripper with brush
- screwdrivers (big and small)
- needle plate screwdriver
- spool pin cap (big and small)
- foot controller
- hard cover
- extension table 50 x 38 cm



Extras inside



seam ripper
with brush



4 bobbins



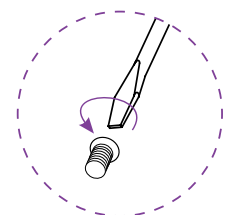
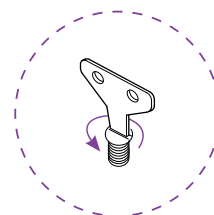
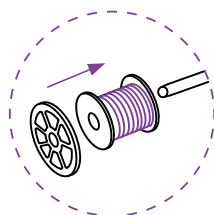
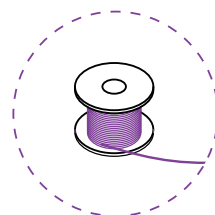
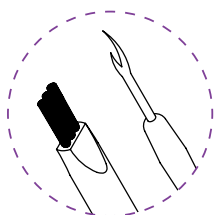
spool pin cap
(big and small)



needle plate
screwdriver



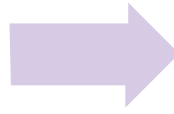
screwdrivers



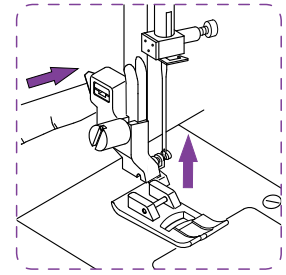
Feet in standard

texi® Ballerina

contains a set of snap-on feet
SYSTEM MATIC



MATIC presser foot holder



standard foot



overlock foot



blind stitch foot



zipper foot



buttonhole foot



satin foot



for everything :)



overcasting



finishing



sewing in zipper



buttonhole hemming



decorative sewing

ABCDe f g h

