

**brother**<sup>®</sup>  
at your side

Accessory  
**CATALOG /**  
**CATALOGUE**



Optional Sewing,  
Quilting and Embroidery Accessories

# Moving to the Next Century

Brother was founded in 1908 and ever since we have been building, creating and innovating state of the art products that have taken your imagination and dreams to a new level of art and creativity. We at Brother continue to work hard to provide and deliver the best quality products and services. Brother "At your side".



HA1-B2



ZZ3-B820



ZZ3-B894



Innov-is I  
Innov-is 6000D





Chain-stitch sewing machine for the production of straw hats



FZ2-B1



Brother Sewing Machine Lineup

03-04

Brother General Sewing Accessories

05-16

Brother Embellishment Feet

17-24

Brother Quilting Feet

25-28

Brother Embroidery Accessories

29-38

Brother Sewing Machine Attachments for PQ Series

39-42

Brother Serger/Overlock Feet

43-46

Brother Cover Stitch Feet

47-50

More From Brother

51

Index

52

You can always find the latest information on our website:  
[www.brother.com](http://www.brother.com)



Please select your machine from the models shown below. Once you find the correct model, please note the letter illustrated in the lower right hand corner of the corresponding illustration. This letter can then be cross-referenced with the accessories shown on the following pages to ensure the accurate selection (i.e. if you have Innov-is 4000D, you would choose accessories that are specified to work with models in the "A" category.).

Please note the correct part number for your region.

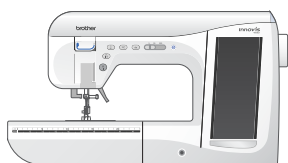
① AMERICA/CANADA. ② All other countries except AMERICA/CANADA. ③ Models for which the shown accessory is compatible.

A

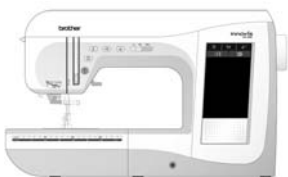
Innov-is I / 6000D



Innov-is 4500D/ 4000D/ 4000, 2500D, 1500D/ 1500



Innov-is QC1000



## State of the Art machine with leading-edge technology

Brother's new and exciting high-end sewing and embroidery machine Innov-is I / 6000D is the perfect multifunction machine. It gives you the best in sewing, quilting, embroidery and even crafting capability! This machine is not only incredibly sophisticated and innovative but friendly and inviting. Loaded with advanced features one can only dream about. We invite you to make your creative dreams come true with this state-of-the-art masterpiece!

## Advanced Sewing & Embroidery Combination Machines

The ultimate in embroidery and sewing utilizing LCD Touch Screens and USB port computer connections.

## Advanced Quilting & Sewing Machines

A wonderful quilting machine giving both the novice and experienced quilter opportunities to express their creative talents. It has an extra large work space and includes a wide array of sewing stitches for almost any need.

B

Innov-is 1200, 1000



Innov-is 600, 400, 350, 200,  
Innov-is NX-650, 450Q, 450, 250



Innov-is 700EII/700E,  
PE-750D, 700II/700



## Affordable Sewing & Embroidery Combination Machines

Feature packed, these machines create beautiful embroidery and sewing at an affordable price.

## Full Feature Sewing & Quilting Machines

Quality results are easily created from these compact but powerful sewing/quilting machines.

## Embroidery Only Machines

With outstanding features, these machines create beautiful embroidered results.

\* All accessories except the embroidery accessories are not available with these embroidery only machines.



C

Innov-is 900D/ 900/ HE-240



Innov-is 500D/ 500, CS-8150, 8130, 8120,  
8080, 8070, 8060, 80



## Sewing & Embroidery Combination Machines

Entry-level model that enables easy sewing and embroidering.

## Cassette-type Sewing Machines

Utilizing an easy to use, unique cassette based threading system. These models allow creative expression.

D

Innov-is 80, 50, 40, 30, 10



Innov-is NX600, 400Q, 400, 200,  
PC420, PC210



## Sewing Machines

Quality results are easily created from these compact and middle-sized sewing machines.

## Full Feature Sewing & Quilting Machines

Quality results are easily created from these compact but powerful sewing/quilting machines.

E

BC-1000/ 2100/ 2300/ 2500 series,  
CS-100/ 4000/ 6000 series,  
ES-2000/ 2200/ 2400 series



## Lightweight Sewing Machines

Fully featured yet lightweight. These sewing machines are versatile while remaining affordable.

Please refer to the following categories if you cannot find your machine in the illustrations.

**F:** PS-3100/3700, PS-53/55/57, PS-2250/ 2360/ 2470, Star 230E/ 240E  
**G:** BM-2600/ 2700/ 3500/ 3600 series,  
XL-2100/ 2200/ 2600/ 3500/ 3600 series, XL-3800  
**H:** XL-6040/6050/6060 series, XL-6452/ 6562, XR-46C/52C, XR-65T  
**I:** XL-5000 series, PS-12-40, PX-100/200/300 series, XL-3000/4000 series, XR-31-40  
**J:** ULT series, Super Galaxie 3000 series  
**K:** PC-6500/8200/8500 series, Super Ace + e, Super Galaxie 2000 series  
**L:** PE-300S/400D

**M:** PC-2800/3000/6000, Super Ace I/II/III S.E, CS-8072  
**N:** PS-2200/2300/2500/  
Star 110/120E/130E/140E  
**O:** PS-1000/1250/1800/1950/2000/2100,  
Star 10/15/20/20E/30E/40E  
**P:** BS-2400 series, LS-1520, LS-1717P/1717B,  
LS-2000/2100/2200/2700/2900/ series,  
VX-1400/1500 series



## Sew as you like.

Use these utility presser feet and accessories to add a professional finish to your sewing projects.





## Adjustable Zipper & Piping Foot



## Adjustable Zipper & Piping Foot

Attaches zippers and pipings easily. Its position can be adjusted exactly on the edge of zipper/piping, avoiding the non-flat parts of zipper/piping, and presses the fabric with just right pressure.

1. Screw on the presser foot and select a straight stitch (left).
2. Position the presser foot over the long feed dogs on either left or right.
3. Loosen the clamp screw at the back of the presser foot and slide the presser foot so that the needle fits on the opening on the presser foot.
4. Check the needle does not hit the presser foot, and then tighten the clamp screw with a screwdriver.
5. Sew.

Requires Low Shank Adapter for ULT series, PC-6500, PC-8200 and PC-8500, and Super Galaxie 2000 and 3000 series sewing machines.

- ① SA161
- ② F036N: XC1970-002
- ③ All Brother home-use sewing machines



①SA133

①F017N: XC1957-002

①ABCDEFGHIJKMN

①SA134

①F018N: XC1976-052

①GHILOP

## Blind Stitch Foot

Creates blind hems on a variety of fabrics, using the adjustable guide on this presser foot. Works well for edge stitching, attaching lace, and fabric edge joining. This is great for both embellishing and utility use.

Blind hem:

1. Fold the fabric up to create the desired hem, then baste about 5 mm from the edge of the fabric.
2. Fold back the fabric along the basting and position the fabric with the wrong side facing up.
3. Position the fabric with the edge of the folded hem against the guide of the presser foot.
4. Lower the presser foot lever.
5. Select the blind hem stitch.
6. Adjust the stitch width until the needle slightly catches the fold of the hem.
7. Sew.
8. Remove the basting.

Edge stitching:

1. Position the needle at the desired distance from the edge of the fabric and lower needle.
2. Turn the foot guide screw, adjust the fabric guide to the edge of the fabric, and lower the presser foot.
3. Sew.



①SA128

①F004N: XC1947-002

①All Brother home-use sewing machines

## Concealed Zipper Foot

Allows you to install concealed zippers easily.

1. Press iron-on interfacing tape to the seam allowance where the zipper will be placed.
2. Baste the seam closed and press.
3. Baste the zipper along the seam allowance.
4. Close the zipper and baste along the seam allowance on both sides of the zipper opening.
5. Cut the basting stitches in the seam.
6. Make the coil stand and sew, holding coil to reference lines in zipper on both sides of zipper.
7. Turn and pull up tab.
8. Fasten metal stop at lower edge of zipper.



## Edge Joining Foot

### Edge Joining Foot

This foot is perfect for precise and easy joining of fabrics, even sheers and difficult fabrics. It can also be used to line up and sew lace to the edge of another fabric.

Joining two fabrics:

1. Place each edge of two pieces of fabric or trim along the guide on the presser foot, right sides up.
2. Sew holding the fabrics/seams firmly against the presser foot guide to join them.

Edge stitching:

1. Place the edge of the fabric against the guide on the presser foot.
2. Position the needle at desired distance from the edge of the fabric and lower the needle and the presser foot.
3. Sew.

Pin tucks:

1. Fold a fabric in half with wrong sides together.
2. Place the fold at the left side of the center guide.
3. Sew and open the fabric.



①SA184

②F056: XC6441-152

③All Brother home-use sewing machines

### Ring Bearer Pillow & Hankerchief

◆ Innov-is Project Book  
(See pages 37 and 39 for details.)



**Narrow Hemmer Foot  
Non Stick Foot**

**Skirt**

◆ Innov-is Project Book  
(See page 50 for details.)



①SA126                      ①SA127  
⑩F002N: XC1946-002   ⑩F003N: XC1945-002  
③ABCDEFJKMN           ③GHILOP

## Narrow Hemmer Foot

Designed to create a flat narrow hem on lightweight fabrics.

1. Place the fabric with the reverse side facing up under the presser foot.
2. Lower the needle into the fabric approximately 1/8" from the edge and sew 2-3 stitches.
3. Raise the needle and the presser foot.
4. Hold the fabric from the back and front and roll it into the curled part of the foot.
5. Position the edge of the fabric behind the needle and lower the presser foot.
6. Slowly sew 2-3 stitches, making sure the fabric is rolling around the curled part of the foot.
7. Continue to sew to the end of the fabric.



①SA114                      ①SA122  
⑩F007N: XC1949-002   ⑩F008N: XC1950-002  
③ABCDEFGHIJKLMNO      ③IP

## Non Stick Foot

Designed for consistent feeding with fabrics such as leather, vinyl and other novelty fabrics.

Select a desired stitch and sew.

**Travel Jewelry Portfolio**

◆ Innov-is Project Book  
(See page 53 for details.)



## Overlock Foot

For vertical bobbin machines only.

Sews overcast seams to protect edges from fraying.

1. Select an overlock stitch.
2. Attach the presser foot.
3. Lower the presser foot so that the foot guide is exactly against the edge of the fabric.
4. Sew along the guide.



①SA135

ⓂF015N : XC1975-052

ⓂGHILOP

## Picot Foot

Creates shell-looking edges on sheer and very lightweight fabrics.

1. Increase upper thread tension.
2. Place the fabric with the reverse side facing up under the presser foot.
3. Lower the needle into the fabric approximately 1/8" from the edge and sew 2-3 stitches.
4. Raise the needle and the presser foot.
5. Hold the fabric from the back and front and roll it into the curled part of the foot.
6. Position the edge of the fabric behind the needle and lower the presser foot.
7. Slowly sew 2-3 stitches, making sure the fabric is rolling around the curled part of the foot.
8. Continue to sew to the end of the fabric.



①SA164

ⓂF039N: XC1974-002

ⓂABCDEFGHIJKMN

①SA149

ⓂF029N: XC1965-002

ⓂGHILOP





①SA538  
②SGI: XC8483-052  
③ABC:Innov-is 900D/ 900

## Seam Guide

Guides fabric edge with an accurate 1/4 inch, 1/2 inch, or 5/8 inch (approx. 6.5, 13, or 16 mm) seam. It can be used with all kinds of presser feet. Can be used for stitching heavy fabrics together.

1. Attach the seam guide on the needle plate with the thumbscrew of the seam guide.
2. Adjust the distance and place the right edge of the fabric against the seam guide.
3. Sew.

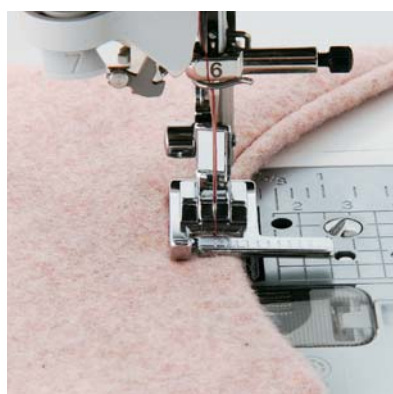


①SA177                      ①SA178  
②F054: XC3879-002    ②F055: XC5351-052  
③ABCDEJ                      ③L

## Side Cutter

Creates the perfect cut edge like a serger or overlock. Selecting the stitches with the side cutter mark allows you to create a beautiful finish without any adjustment on stitch settings (machines with no cutter mark require adjustment of the stitch width).

1. Make a cut about 2 cm (3/4") long in the seam line of the fabric.
2. Select a stitch, and adjust settings as needed.
3. Place the cut right section on the top of the foot guide plate.
4. Slip the left side under the presser foot.
5. Lower the presser foot and guide the fabric through the presser foot as it stitches.



①SA160  
②F035N: XC1969-002  
③ABCDEFGHIJKLMNO

## Stitch Guide Foot

The scale in the presser foot can be used for perfect topstitching on both straight and curved lines. Each divisional mark equals 2 mm.

1. Select straight, zigzag, or decorative stitches.
2. Sew the stitches keeping a certain seam allowance.  
To sew a curve, sew so that the fabric edge becomes a right angle against the presser foot.

**Straight Stitch Foot**  
**Straight Stitch Foot and Straight Stitch Needle Plate**  
**Vertical Stitching Alignment Foot**

## Straight Stitch Foot

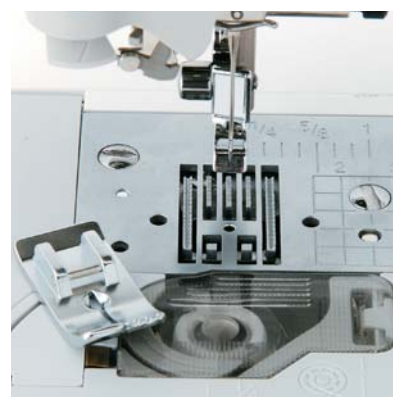
For precise straight stitching on thin fabrics or on edges of fabrics. Use this presser foot only with the center straight stitch.



- ① SA108                      ① SA167
- ② F011N:XC1954-002    ② F042N:XC1973-052
- ③ GHILOP                  ③ ABCDEFJKMN

## Straight Stitch Foot and Straight Stitch Needle Plate

Use Straight Stitch Foot with Straight Stitch Needle Plate to accomplish perfect straight stitching. Installing Straight Stitch Needle Plate automatically sets the needle position to the center straight stitching position on selected machines.



- ① SA550
- ② SNP01: XD0606-152
- ③ A

## Vertical Stitching Alignment Foot

This specially marked "V" foot is included with the Innov-is I/ 6000D but is also available as an accessory for other selected models. The side extension ruler on this foot lets you measure the distance from the needle to the edge of your fabric consistently. Great visibility while you add creativity to your next project! Available in Fall 2008.



- ① SA189
- ② F063: XE5224-001
- ③ ABCDEFGHIJKLMNO

**Zigzag Foot (with leveling button)  
Adapter for Low Shank**



①SA175

②F052: XC3876-052

③JK

①SA176

②F053: XC3875-052

③ABCDEFMN

## Zigzag Foot (with leveling button)

This zigzag foot is equipped with a feature that keeps the foot level when sewing thick seams.

1. While keeping the black button on the left side of the presser foot, lower the presser foot.
2. Release the black button, and the presser foot remains level.
3. Sew and then the black button will return to the normal position.



①SA130

②F009N: XC1951-002

③PC-8200/ Super Galaxie 2000

①SA131

②F010N : XC1952-002

③PC-6500/8500, Super Ace + e, Super Galaxie 2100

## Adapter for Low Shank

Attaching this adapter onto the presser foot shaft lets you use optional feet on a low shank.

1. Remove Presser Foot Holder.
2. Attach Adapter with Low Shank on Presser Foot Shaft with the screw.
3. Attach the presser foot.



## King Thread Spool Stand

### King Thread Spool Stand

Lets you set two large spool threads such as king typed spool threads during sewing, quilting and embroidering. It can be attached to a handle of a machine, and does not require any extra space. Compatible with Innov-is 4500D, 4000D/4000, 2500D, 1500D/1500, and QC-1000.

1. Remove the top cover of a sewing machine.
2. Attach the spool stand onto the machine handle.
3. Place the thread spool on the stand and thread the machine.



①SA542

②TS3: XE1833-001

③A

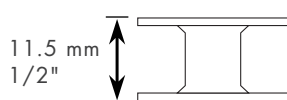


**Bobbins**  
**Bobbins and Bobbin Clips**  
**Thread Cassette**

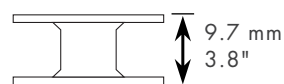


## Bobbins

There are two different sizes. Select either one appropriate for your machine. One package includes ten bobbins.



- ① SA156
- ② SFB: XA5539-151
- ③ ABCDEFGHIP



- ① SA155
- ② TLB: XA3812-151
- ③ JKLMNO



- ① SABOBClip
- ② BCL: XE4736-001
- ③ ABCDEFGHIP

## Bobbins and Bobbin Clips

10 reusable high-quality and high-performance SA156 Bobbins with a new Bobbin Clip that keeps thread from unwinding. The Bobbin Clips can also be connected to each other for quick and easy storage!



- ① SA250
- ② TC1: XC4716-023
- ③ C: Innov-is 500D/ 500, CS8150, 8130, 8120, 8080, 8070, 8060, 80

## Thread Cassette

For sewing machines with easy thread cassette system. Having two or more thread cassettes lets you prepare the next thread color while you are waiting for your machine to finish embroidering with the present thread.

Wide Tables



## Wide Tables

Useful for quilting and other large projects.  
Available with/without a free-motion guide grip.

Without a free-motion guide grip:

- |                  |  |                  |                  |                  |                                  |
|------------------|--|------------------|------------------|------------------|----------------------------------|
| ①SA504           | ①SA537                                   |                  | ①SA551           |                  | ①SA552                           |
| ②WT1: X81122-051 | ②WT2: XC4541-021                         | ②WT3: XC4922-021 | ②WT5: XC9567-122 | ②WT7: XD0997-022 | ②WT8: XE2472-001                 |
| ③KM              | ③D (NX-600, 400, 400Q, 200, PC-420, 210) | ③FH              | ③B               | ③EG              | ③D (Innov-is 80, 50, 40, 30, 10) |



Expand the work area of your sewing machine with an easy to attach, extra wide extension table that is perfect for large quilting and sewing projects. This table also offers an on-board ruler for those last minute measurements, four adjustable table legs and a storage area for your knee lifter. The Free-Motion Grip gives you added control and visibility for your next project.

With a free-motion guide grip:

- |                  |  |                    |
|------------------|--|--------------------|
| ①SA-TFM2004      | ①SA-TFM4000D                               | ①SATFM6000D        |
| ②TFM: XC5987-052 | ②TFM-2: XC8645-052                         | ②TFM-3: XE5062-001 |
| ③J               | ③Innov-is 4500D/ 4000D/ 2500D/ 1500D/ 1500 | ③Innov-is I /6000D |



## Go decorative.

Personalize your projects with Brother Embellishment Feet!



Binding Foot

## Binding Foot

Attaches bias tape with widths less than 7 mm (1/4 inch) using straight, zigzag or decorative stitches.

1. Before attaching the presser foot, insert the bias tape into the funnel guide to match the tape edge to the guide side.
2. Pull the tape from the rear of the presser foot.
3. Snap on the presser foot.
4. Adjust the needle position so that the needle lines up to the edge of the bias tape.

Hint: If the needle does not position properly on the bias tape, loosen the position knob on the foot to slide the guide to the left or right.



① SA109

② F014N: XC1955-002

③ All Brother home-use sewing machines



### Baby Vest

◆ Innov-is Project Book  
(See page 41 for details.)



Baby Blanket, Pillow & Bib



①SA141

⑩F021N: XC1960-002

⑪All Brother home-use sewing machines

## Braiding Foot

Attaches up to 5mm wide braids, ribbons, tapes, cords, etc.

1. Loosen the screw on the presser foot and insert a braid through the guide before attaching the presser foot on the machine.
2. Slide the plate of the guide back and forth to fit the width of the braid.
3. Tighten the screw and pull the braid behind the presser foot.
4. Attach the presser foot onto the machine.
5. Set the zigzag width slightly wider than the width of the braid.
6. Stitch braid in place.



①SA145

⑩F023N: XC1958-002

⑪ABCDEFGHIJKLMNO

①SA144

⑩F022N: XC1959-002

⑪IP

## Clear-view Foot

Use this presser foot where visibility of seams or pattern markings are desired. Perfect for quilting appliqué!

1. Attach the presser foot and select a stitch from satin or decorative stitches.
2. Line up the center guide mark on the presser foot over the desired seams or pattern markings.
3. Sew.



**Cording Foot**  
**Cording Foot (5-hole)**  
**Cording Foot (7-hole)**

## Cording Foot

Used for embellishing 1 to 3 cords or decorative threads. Perfect for couching!

1. Slip a cord from the right of the presser foot, and place each cord into each guide (to use single cord, use the center guide).
2. Place cord under the presser foot, and select zigzag stitch with maximum stitch width.



①SA110

②F013N: XC1956-002

③ABCDEFJKMN

①SA148

②F024N: XC1967-002

③GHILOP

## Cording Foot (5-hole)

Used for embellishing 1 to 5 cords or decorative threads. It can be used with brother sewing machines of 7 mm feed width.

1. Insert cords or threads into each hole on the presser foot.
2. Attach the presser foot and pull cords under the presser foot.
3. Line up the cords, and select zigzag stitch with maximum stitch width.



①SA157

②F019N: XC1962-002

③ABCDEFJKMN



## Cording Foot (7-hole)

Used for embellishing 1 to 7 cords or decorative threads. It can be used with brother sewing machines of 7 mm feed width.

1. Insert cords or threads into each hole on the presser foot.
2. Attach the presser foot and pull cords under the presser foot.
3. Line up the cords, and select zigzag stitch with maximum stitch width.

①SA158

②F020N: XC1961-002

③ABCDEFJKMN



①SA142

⑩F025N: XC1968-002

⑩All Brother home-use sewing machines

## Fringe Foot

Used to mark construction details by creating tailor tacks. It can create 3-D loops and fringes with a single zigzag stitch.

Making loops or fringes:

1. Select zigzag stitch and set the stitch width to more than 5 mm.
2. Decrease the upper thread tension and test various settings to see which one works on the fabric you are using.
3. Line up the center of the presser foot on a drawn pattern line and sew (cut the center of loops to make fringes).

Creating tailor tacks:

1. Sew a few stitches to mark.
2. Mark a guideline to follow on your fabric.
3. Line up the center of the foot with the guideline and sew.



①SA120

⑩F012N: XC1953-002

⑩All Brother home-use sewing machines

## Gathering Foot

Used for gathering fabrics. Ideal for clothing as well as home decor. Works best on thin to medium weight fabrics.

For gathering:

1. Select a straight stitch, left needle position.
2. Increase the upper thread tension.
3. Place the fabric to be gathered under the presser foot.

To attach the gathered edge to a flat fabric:

1. Select a straight stitch, left needle position.
2. Increase the upper thread tension.
3. Place the fabric to be gathered, right side up, under the presser foot.
4. Slide the fabric not to be gathered into the slit in the presser foot with the surface of the fabric facing down.

Requires Low Shank Adapter for ULT series, PC-6500, PC-8200/PC-8500, and Super Galaxie 2000/3000 series sewing machines.



Girl's Dress

◆ Innov-is Project Book  
(See page 47 for details.)



Metal type

①SA146

②F026N: XC1963-002

③IP

Metal type

①SA186

②F060: XE1094-001

③ABCDEFGHIJKLMNO



Plastic type

①SA147

②F027N: XC1964-002

③ABCDEFGHIJKLMNO

## Open Toe Foot

Provides better visibility in the needle area. Ideal for securing edges of appliqué, sewing curves, topstitching, etc.

Adding decorative stitches over seams or patterns:

Line up the center guide mark (red) of the presser foot to the seam or pattern line and sew.

For appliqué:

1. Line up the center guide mark (red) of the presser foot to the edge of appliqué.
2. Zigzag-sew with dense stitches.

## Pearls and Sequins Foot

Attaches threaded beads, sequins or rounded cords up to 4 mm in size. Its wide groove also helps you to make or attach piping. Also used for edge-stitching heavy fabric such as knits.

1. Adjust the upper thread tension.
2. Place threaded beads in groove of the foot.
3. Stitch in place using zigzag stitch with transparent thread.

①SA150

②F028N: XC1966-002

③ABCDEFJKMN



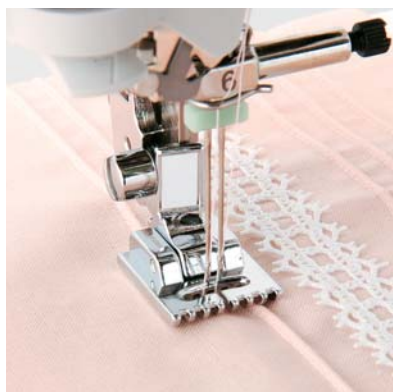


**Bed Runner & Pillowcase**

◆ Innov-is Project Book  
(See pages 16 and 17 for details.)







## Pin Tuck Foot

This presser foot has 7 grooves and produces perfect pin tucks and corded pin tucks using a twin needle on lightweight fabric. A specially designed bobbin cover is also included with this presser foot.

1. Install and thread a twin needle.
2. Draw a reference line to guide your first row of stitching and use that to sew the first row in the center position.
3. Further rows can be evenly spaced by placing the completed row in one of the grooves.
4. Sew slowly for most consistent results.

For seven grooves:

①SA179

②F058: XC3272-052

③F059: XE0873-001

④ABCDEJ

⑤ABCDEJ

⑥B

This presser foot is compatible with Innov-is 600, 400 and 200.

For five grooves:

①SA162

②F037N: XC1971-002

③IP

This presser foot does not include the bobbin cover.



## Ruffler Foot

Makes ruffles with evenly spaced tucks and gathers. The ruffling blade on the lower portion of the presser foot is moved forward, its teeth catch a fabric and force it forward into gathers or tucks. The intervals of tucks can be adjusted.

1. Adjust the amount of tuck or gather by trying different combinations of stitch length, tuck setting and depth setting.
2. Use a stiff card to slide the fabric from left into the slot, and stitch slowly.
3. Move fabric about 2.5 cm (1") past the needle to get started.

①SA143

②F051: XA9093-002

③AFJKM

## Quality quilting

Brother offers you innovative accessories to make quilting easier, helping you create more precise and more beautiful results.

25

Baby Quilt Quilted by Janice Ferguson







## 1/4" Piecing Foot 1/4" Piecing Foot with Guide Quilting Guide



①SA125  
⑩F001N: XC1944-002  
⑩All Brother home-use sewing machines

## 1/4" Piecing Foot

Best for quilt and patchwork piecing with 1/4" or 1/8" seam allowance. Its back and small needle opening are designed to give the right pressure on fabrics.

1. Snap on the presser foot and select a center straight stitch.
2. With right sides together place two pieces of fabric, and line up edges of fabrics to the right side of the presser foot, to create even 1/4" (6.5 mm) seams.
3. To create 1/8" (3.2 mm) seams, guide fabric on the left side of the foot.



①SA185  
⑩F057: XC7416-052  
⑩All Brother home-use sewing machines

## 1/4" Piecing Foot with Guide

Creates perfect quilt and patchwork piecing with 1/4 inch seam allowance. Accomplishes beautiful long strip piecing.

1. Snap on the presser foot and select a center straight stitch.
2. With right sides together place two pieces of fabric, and line up edges of fabrics to the fabric guide of the presser foot.



①SA132  
⑩F016N: XC2215-002  
⑩All Brother home-use sewing machines

## Quilting Guide

Use it to sew parallel rows at preset even intervals. The distance between the straight bar and the needle can be adjusted by sliding the guide.

1. Stitch the first straight row.
2. Insert the straight bar into the hole of the presser foot holder, or a mounting hole on the walking foot.
3. Adjust the stem of the quilting guide so that the guide aligns with the seam that has already been sewn.
4. Adjust the guide to the desired width of the seam.
5. Stitch, keeping the guide in the first row of stitching.





①SA187  
⑩F061: XE1097-001  
⑩ABCDEFGHIJMNO

## Open Toe Quilting Foot

The large opening on the front of the foot gives you wide visibility in the needle area. Use for free-motion, outline quilting, etc.

1. Screw on the Open Toe Quilting Foot, with the pin over the needle clamp screw.
2. Lower the feed dogs.
3. Use the foot controller so that both hands are free to guide the fabric.
4. Select a straight stitch or your preferred stitch such as zigzag stitch.
5. Set the fabric under the presser foot.
6. While starting to sew, press the needle position button twice to pull the bobbin thread to the quilt top.
7. Gently holding the upper and bobbin threads sew about four locking stitches.
8. Guide the fabric with both hands while keeping the fabric pulled tight.
9. When quilting is finished, sew about four locking stitches and finish the thread ends.

Requires Low Shank Adapter for ULT series, PC-6500, PC-8200 and PC-8500 sewing machines.



①SA129      ①SA165  
⑩F005N: XC1948-002    ⑩F040N: XC1972-002  
⑩ABCDEFGHIJMNO      ⑩L

## Quilting Foot

For darning, quilting, or free-motion. The foot raises and lowers with the needle to allow fabric to be moved between stitches and to hold fabric in place while stitches are created.

1. Lower the feed dogs.
2. Set the machine for straight stitch.
3. Place the fabric beneath the presser foot.
4. Use both hands to hold the fabric firmly.
5. Begin to sew moving the fabric at an even pace in order to sew uniform stitches roughly 2.0 - 2.5 mm in length.

Requires Low Shank Adapter for ULT series, PC-6500, PC-8200 and PC-8500 sewing machines.

## Walking Foot/Open Toe Walking Foot

### Walking Foot/Open Toe Walking Foot

The feed dogs on the walking foot moves at the same pace as the machine's lower feed dogs to feed the fabric consistently. Fabrics that can be difficult to sew such as vinyl, leather, quilting layers and velvet can be easily sewn. Use the walking foot with the closed front for thick layers of fabric and the walking foot with the open front when greater visibility is needed.

1. Attach the walking foot to the machine.
2. Set the machine to straight stitch.
3. Sew.

Requires Low Shank Adapter for ULT series, PC-6500, PC-8200 and PC-8500, and Super Galaxie 2000 and 3000 series sewing machines.



Walking Foot

- |                      |                      |
|----------------------|----------------------|
| ① SA140              | ① SA107              |
| Ⓜ F033N:XC2214-002   | Ⓜ F034N : XC2165-002 |
| Ⓜ ABCDEFJKMN         | Ⓜ GHO                |
| ① SA166              | ① SA169              |
| Ⓜ F041N : XC2213-002 | Ⓜ F050N : XC2169-002 |
| Ⓜ L                  | Ⓜ I                  |



Open Toe Walking Foot

- |                    |
|--------------------|
| ① SA188            |
| Ⓜ F062: XE1100-001 |
| Ⓜ ABCDEFJKMN       |

## Embroider, Embellish, Enjoy.

Brother offers a wide range of embroidery accessories allowing you to easily design and create your own original projects.





**PE-DESIGN 8.0/ UGK8**  
**PE-DESIGN Lite**  
**PED-BASIC**



① PEDESIGN8.0

① SAVR8.0

## PE-DESIGN 8.0/ UGK8

Turn your ideas into embroidery with Brother's PE-DESIGN 8.0 software!

This personal embroidery design software system comes with five applications: Design Center, Layout & Editing, Font Creator, Programmable Stitch Creator, and Design Database. You can design your own unique embroidery patterns in easy steps. Comes with USB card writer, 4M blank memory card and software compatible with Windows 2000 or later.

UGK8 Upgrade kit is compatible with PE-DESIGN 5.0, 6.0 & 7.0.



① PEDESIGN LITE

## PE-DESIGN Lite

New to embroidery software? Master basic digitizing and embroidery design work with Brother's easy to use PE-DESIGN Lite.

PE-DESIGN Lite is designed for the individual that needs more than PED-BASIC's downloading capability but doesn't need all of the top end features of the PE-DESIGN 8.0 software. Comes with a USB card writer and blank memory card and is compatible with Windows 2000 or later.



① PED-BASIC

## PED-BASIC

Download .pes embroidery designs from the Internet with PED-BASIC.

PED-BASIC lets you obtain or purchase .pes embroidery designs from the Internet to use with your Brother home embroidery machine. It comes with USB card writer, 4M blank memory card and software compatible with Windows 98 or later.

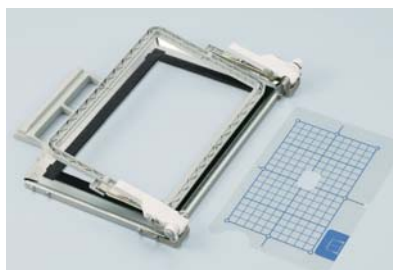
Innov-is I /6000D Embroidery Card Reader  
Innov-is I /6000D Border Frame



①SAECR1

②SAECR1

③Only compatible with Innov-is I / 6000D



①SABF6000D

②BF2: XE5059-001

③Innov-is I / 6000D

## \*Innov-is I /6000D Embroidery Card Reader

Connect your embroidery card reader using the built-in USB port on your Innov-is I /6000D. This Embroidery Card Reader is compatible with the entire library of Brother Embroidery Cards. The simple and easy USB attachment takes seconds to connect and ensures your treasured collection of designs will work beautifully in our new Innov-is I /6000D.

\*Innov-is I is not compatible with Disney memory cards.

## Innov-is I /6000D Border Frame

This border frame simplifies the process of making beautiful borders. Used in conjunction with the built-in software in your new machine you can create continuous border patterns from the stunning designs that come with the Innov-is I /6000D. The Border Frame enables you to repeat designs vertically or horizontally. Easy to add and easy to see reference stitches to assure perfectly connected and aligned designs. The border frame lifts open to allow you to easily slide your fabric to the next location!

## Innov-is 4500D/4000D Premium Package

## Innov-is 4000D/4000 Premium Package

Exclusively for the Innov-is 4000D/4000 this upgrade adds outstanding quilting features, updated embroidery functionality and enhanced USB capability.

Expand the functionality of your Innov-is 4000D/4000 by adding special features to the actual machine:

- Automatic Height Adjuster (AHA) feature adjusts the presser foot pressure automatically and continuously to give you superior stitch quality when stitching over differing fabric thicknesses.
- Accepts USB mouse\* to navigate LCD screen.
- Compatible with USB hub devices\* to provide access to memory devices\*.
- Drag and drop embroidery pattern positioning.
- Includes three new free-motion presser feet:  
Free-motion quilting foot "C" for more control with center needle position straight stitch  
Open toe quilting foot "O" for greater visibility  
Echo quilting foot "E" for perfect echo quilting
- Reduce letter spacing in embroidery fonts.
- The 4000D/4000 Premium Upgrade Package is compatible only with the Brother Innov-is 4000D/4000 sewing and embroidery machine.

\* Requires additional purchases.



①SAVR4000D

②UPG4000D: XE1302-001

③Innov-is 4000D/4000



**Innov-is 4500D/4000D/4000 Premium  
Upgrade Package**



①SAVR4500D

②UPG4000D II :XE2527-001

③Innov-is 4500D/4000D/4000

## Innov-is 4500D/4000D/4000 Premium Upgrade Package

Exclusively for all Innov-is 4500D's and Innov-is 4000D/4000 machines that have been upgraded with the UPG4000D Premium Package. Add even more features to your top of the line machine.

Add tremendous functionality to your machine with these features:

- New Border Frame and 28 Unique Embroidery Patterns. Allows you to embroider beautiful motifs continuously as border designs. Good for embellishing a wide variety of items.
- Sewing Decorative Stitches as embroidery. Use the Border Frame to embroider 150 decorative sewing stitches within the frame.
- Add appliqué capability to your embroidery designs with the new Appliqué Creator Function.
- Change your LCD screen background color for easier viewing of difficult to see embroidery designs.
- Customizable USB Mouse\* Pointer Functions.
- Character/Font Pattern Separation. Greater functionality in adjusting the spacing between individual characters.
- Basting Function to prevent shrinkage and misalignment of embroidery designs
- Addition of 2 new small fonts and 2 new Cyrillic fonts.

\*Requires additional purchase.

### Nightie

◆ Innov-is Project Book  
(See page 18 for details.)





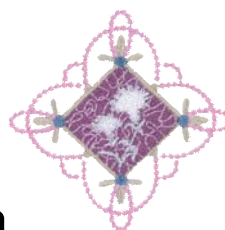
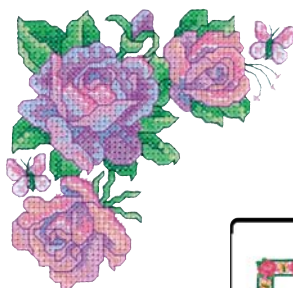
## Explore Brother's Wide Selection of Embroidery Designs

At Brother, the possibilities are limitless! This collection features something for nearly every taste: whimsical, traditional, seasonal, lacy, country, juvenile, elegant and more. The collection continues to grow and every card is compatible with every Brother-made home embroidery machine.



**Napkin Holder  
Wine Coaster**

◆ Innov-is Project Book  
(See page 13 for details.)



Embroidery cards shown are just a sample. To view the entire collection, visit [www.brother.com](http://www.brother.com).

**Satin Finish Embroidery Thread Sets**  
**Country Thread Sets**  
**Bobbin Threads**

For the best embroidery result, use these embroidery threads especially designed for Brother sewing/embroidering machines.



**Satin Finish Embroidery Thread Sets**

**A (40 colors)**

- ①SA740
- ⑩ETS-40N : XC5518-001

**B (22 colors)**

- ①SA741
- ⑩ETS-22N : XC5516-002

**C (12 colors)**

- ①SAETTS
- ⑩ETS-12N : XC5517-002

**Country Thread Sets**

**D (40 colors)**

- ①CYT-40
- ⑩CYT-40 : X81078-102

**E (21 colors)**

- ①CYT-41
- ⑩CYT-21 : X81269-102

## Satin Finish Embroidery Thread Sets

The Satin Finish Thread is soft to the touch and provides extra strength as well as the perfect amount of elasticity. This thread is rich in colorfast color. Each spool contains 300 meters of 50 wt. (135dtex/2) polyester high-multifilament thread. Available in packages of 40/22/12 colors. Individual colors are also available at selected dealers.

## Country Thread Sets

The Country Threads are supple threads in soft country colors perfect for country-style and heirloom embroidery. Each spool contains 300 meters of 60 wt. (135dtex/2) spun thread of doubled and twisted short polyester fibers, which prevents shrinking at the seams and produces beautiful embroidery. Individual colors are also available at selected dealers.



**A (White):**

- ①SAEBT
- ⑩EBT-CEN: X81164-001

**B (Black):**

- ①SAEBT999
- ⑩EBT-CEBN: XC5520-001

**C (White only):**

- ①EBT-PE
- ⑩EBT-PEN: XC5996-001

## Bobbin Threads

Brother Bobbin Threads are strong, soft and smooth, and perfectly balanced to the needle thread. For best results, use the Brother Bobbin Thread designed for your machine.

**A and B (Black and White):**

The 1,100-meter 60 wt. filament thread is best suited for the Innov-is I, Innov-is 6000, 4000, 2500, 1500, 1200, 900, 500 series, PC-, ULT and SG-series machines and the PE400D and 500D.

**C (White only):**

The 1,000-meter 90 wt. spun thread is ideal for our embroidery only machines, Innov-is 700EII/700E, PE750D, PE700II/700.



## Embroidery Frames

Select frames appropriate for your machine. Some frames can be used only with limited machines. Ask at the selected dealer or check in our website for details.



### For Innov-is I 6000D:

- Extra-large: 300 x 200 mm (approx. 12 x 8 inches)
  - ① SA447/EF92
  - ② EF92:XC5071-001
- Quilt: 200 x 200 mm (approx. 8 x 8 inches)
  - ① SA446/ EF91
  - ② EF91: XE5068-001
- Small: 20 x 60 mm (approx. 1 x 2-1/2 inches)
  - ① SA437/EF73
  - ② EF73:XC8479-052
- Extra-large: 300 x 180 mm (approx. 12 x 7 inches)
  - ① SA440/EF76
  - ② EF76: XC8482-052
- Large: 180 x 130 mm (approx. 10-1/4 x 6-1/4 inches)
  - ① SA439/ EF75
  - ② EF75: XC8481-052
- Extra-large: 260 x 160 mm (approx. 10-1/4 x 6-1/4 inches)
  - ① SA441/ EF81
  - ② EF81: XC9763-052
- Medium: 100 x 100 mm (approx. 4 x 4 inches)
  - ① SA438/EF74
  - ② EF74:XC8480-052

### For Innov-is 4000D/4000 series:

- Extra-large: 300 x 180 mm (approx. 12 x 7 inches)
  - ① SA440/EF76
  - ② EF76:XC8482-052
- Medium: 100 x 100 mm (approx. 4 x 4 inches)
  - ① SA438/EF74
  - ② EF74:XC8480-052
- Extra-large: 260 x 160 mm (approx. 10-1/4 x 6-1/4 inches)
  - ① SA441/EF81
  - ② EF81:XC9763-052
  - \* Compatible with version 2.0 or later.
- Small: 20 x 60 mm (approx. 1 x 2-1/2 inches)
  - ① SA437/EF73
  - ② EF73:XC8479-052
- Large: 180 x 130 mm (approx. 10-1/4 x 6-1/4 inches)
  - ① SA439/EF75
  - ② EF75:XC8481-052

### For Innov-is 2500D/1500D/1500:

- Extra-large: 26 x 16 cm (approx. 10-1/4 x 6-1/4 inches)
  - ① SA441/EF81
  - ② EF81:XC9763-052
- Large: 18 x 13 cm (approx. 7 x 5 inches)
  - ① SA439/EF75
  - ② EF75:XC8481-052
- Medium: 10 x 10 cm (approx. 4 x 4 inches)
  - ① SA438/EF74
  - ② EF74:XC8480-052
- Small: 2 x 6 cm (approx. 1 x 2-1/2 inches)
  - ① SA437/EF73
  - ② EF73:XC8479-052

### For Innov-is 1000/1200/700 series, PE-700 series (embroidery only machines):

- Extra-large: 300 x 130mm (approx. 12 x 5 inches) (Multi-position)
  - ① SA445/EF85
  - ② EF85:XD0601-002
- Large: 180 x 130mm (approx. 7 x 5 inches)
  - ① SA444/EF84
  - ② EF84:XD0600-002
- Medium: 100 x 100mm (approx. 4 x 4 inches)
  - ① SA443/EF83
  - ② EF83:XD0599-002
- Small: 20 x 60mm (approx. 1 x 2-1/2 inches)
  - ① SA442/EF82
  - ② EF82:XD0598-002

### For Innov-is 900series, 500 series, PE-300S, PE-400D:

- Large: 172 x 100 mm (approx. 6-3/4 x 4 inches)
  - ① SA434/EF71
  - ② EF71:XC2026-102
- Medium: 100 x 100 mm (approx. 4 x 4 inches)
  - ① SA432/EF62
  - ② EF62:XA6628-102
- Small: 20 x 60mm (approx. 1 x 2-1/2 inches)
  - ① SA431/EF61
  - ② EF61:XA6630-102

### For ULT series, Super Galaxie:

- Large: 260 x 160 mm (approx. 10-1/4 x 6-1/4 inches)
  - ① SA428/EF65
  - ② EF65:X81274-002
- Medium Plus: 180 x 130 mm (approx. 7 x 5 inches)
  - ① SA429/EF69
  - ② EF69:X81329-002
- Medium: 100 x 100 mm (approx. 4 x 4 inches)
  - ① SA427/EF64
  - ② EF64:X81273-002
- Small: 20 x 60 mm (approx. 1 x 2-1/2 inches)
  - ① SA426/EF63
  - ② EF63:X81275-002

### For PC-8200, 8500, 8500D series, Super Galaxie 2000 series, Super Ace + e:

- Extra-large: 300 x 130 mm (approx. 12 x 5 inches)
  - ① SA425/EF60
  - ② EF60:X81124-001
- Large: 180 x 130 mm (approx. 7 x 5 inches)
  - ① SA423/EF23
  - ② EF23:X80902-002
- Medium: 100 x 100 mm (approx. 4 x 4 inches)
  - ① SA422/EF22
  - ② EF22:X80903-002
- Small: 20 x 60 mm (approx. 1 x 2-1/2 inches)
  - ① SA421/EF21
  - ② EF21:X80904-102

### For PE-200/100/150/170D/180D/190D

- Large: 182 x 110mm (approx. 7-1/8 x 4-1/4 inches)
  - ① SA418/EF33
  - ② EF33:XA3733-001
- Medium: 110 x 110mm (approx. 4-1/4 x 4-1/4 inches)
  - ① SA417/EF32
  - ② EF32:XA3727-001
- Small: 70 x 70mm (approx. 2-3/4 x 2-3/4 inches)
  - ① SA416/EF31
  - ② EF31:XA3730-001
- Extra-small: 20 x 50mm (approx. 1 x 2 inches)
  - ① SA415/EF30
  - ② EF30:XA3713-001

**Free-Standing Ten Spool Thread Stand**  
**Ten Spool Thread Stand**  
**Stabilizer (rolled type)**



For all models:

① SA503

⑩ TS1: X81123-001

## Free-Standing Ten Spool Thread Stand

You can set up to 10 spools of thread. Spend less time changing threads, and more on creating.

For all embroidery and sewing/embroidery machines.



① SA539

⑩ TS2: XC9655-052

⑩ Innov-is 4500D/ 4000D/ 4000/2500D/1500D/1500

① SA560

⑩ TF4: XE5065-001

⑩ Innov-is I/6000D

## Ten Spool Thread Stand

This 10-Spool Thread Stand snaps securely in place on to your machine to provide 10 vertical spool pins for thread delivery or bobbin storage. Allows easy access to frequently used thread colors. Place your threads in the proper color sequence for your next embroidery, quilting or sewing project. The spool pins can easily be removed to accommodate a variety of spool sizes. Take control of your spool thread tails by placing them in the storage slots.



① SA519

⑩ BM3: XE0806-001

## Stabilizer (rolled type)

Brother offers high quality stabilizers for better embroidery results. Always use stabilizer when embroidering to provide a good foundation as well as prevent fabric slippage and puckering.

3 pieces of 28 x 100 cm (approx. 11 x 39-1/2 inches). Tear-away type.

1. Place the stabilizer onto the back of a fabric.
2. Iron it on to attach it.
3. Embroider a motif.
4. Tear away the stabilizer.

## Water Soluble Stabilizer

### Water Soluble Stabilizer

Perfect for fabrics and applications when it is important that no stabilizer remains after the embroidery is completed. It is also useful on top of the fabric when embroidering on high nap fabric such as toweling or fur. You can make 3-D effects and create lace.

Embroidering lace:

1. Hoop an organdy with a water soluble stabilizer.
2. Embroider lace designs.
3. Cut out the designs close to their edges.
4. Soak in water to remove the stabilizer.



① SA520

① BM5: XE0615-001



#### Christmas Tree Ornament

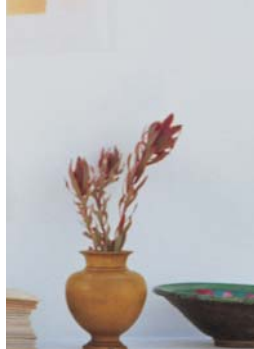
◆ Innov-is Project Book  
(See page 33 for details.)



## Achieve professional results with quality attachments.

PQ sewing machines are designed to create beautiful straight stitching on any material. Even soft fabric such as velvet or georgette can be sewn precisely. Their workspaces are large enough to handle large projects such as coats, dresses, curtains, and quilts.





## Spring Action Guides

There is guide on this foot to sew edge stitching or topstitching right where you want. Three feet are available with 2 mm, 5 mm, or 8 mm guide.

Edge stitching:

Align the guide with the edge of the fabric and sew.

Topstitching:

Fold the seam allowance to one side, and then sew topstitching while aligning the guide with the edge of the fold.



① SA170: 2 mm, 5 mm, 8 mm (3 feet included)

② F044: XC1592-052 (2 mm)

F045: XC1599-052 (5 mm)

F046: XC1606-052 (8 mm)

## Gathering Foot

This foot can be used for lightly gathering fabrics.



① SA171

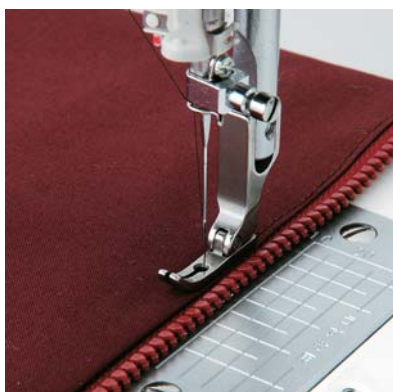
② F047: XC1612-052



① SA173  
⑩ F049: XC1577-052

## Heavyweight Foot

An improved larger foot print assures better contact of the fabric to the feed dogs, aiding in the proper feed on heavy weight materials such as canvas, fake fur and lace.



① SA172  
⑩ F048: XC1584-052

## Very Narrow Foot

Very convenient for attaching piping, zippers, stitching angled corners, etc.

This narrow foot has a good surface to maintain contact with the feed dogs and can slip into very small areas.



① SA159  
⑩ MB\_N:XA8284-102

## Bobbin for PQ Series

One package includes five metal bobbins.



## Needle Felting Attachment Felting Needle



① SA180B

② NFA1: XC4415-002

## Needle Felting Attachment

Use this unique attachment to get needle felting effects easily on your PQ series! You can attach it just like an ordinary presser foot, and embellish fabrics with wool roving or yarn. Comes with Dust Box and Needle Guide. No thread is required to use it.

1. Attach the Needle Felting Attachment and lower the feed dogs.
2. Draw a rough sketch on fabric or garment with a chalk pen.
3. Put a small amount of wool roving or yarn on the fabric under the Needle Felting Attachment.
4. Move the fabric while sewing.



① SA181

② FN1: XC7138-001

## Felting Needle



Needle Felted Cap & Scarf

## Overlock –not only for hemming, but also for decorating.

Brother overlock machines are easy enough for sewing beginners, yet satisfying enough for professionals. Attach feet to produce decorative effects!





① X76590-002, X76661-001

② X76590-002, X76661-001

X76590-002 is compatible with 3034D, 1034D, PL1050, PL1500, M640D, M929D, M9600TD and M9700D.

X76661-001 is compatible with PL1600, PL2100 and M9800LD.

## Blind Stitch Foot

For trimming edges, finishing and hemming in one operation.

Blind stitching:

1. While folding the fabric by hand, sew so that the needle just catches the folded edge.
2. Open up the fabric.

Flatlock stitching for medium weight to heavyweight fabric:

1. Fold the fabric and insert it into the material guide on the front of the foot.
2. Adjust the material guide so that the needle moves down at the position 2.5 - 3.0 mm inside the folded edge.
3. Pull the fabric open (flat).



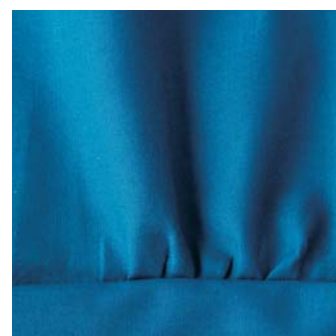
① SA213

② X77459-001

## Gathering Foot

Set two pieces of the fabric, one on top and the other on the bottom of the guide of presser foot. It gathers the fabric on the bottom as sewing both in one operation.

1. Set the machine setting, 3/4 thread overlock, stitch length to 3 mm, stitch width to 2 mm from 5 mm, and differential ratio to 1 from 2.
2. Place the bottom fabric (the fabric will be gathered) under the guide on the front of the gather foot.
3. Place the top fabric (the fabric will not be gathered) between the guide and the foot.
4. Sew while keeping the fabrics aligned.







① SA211, XB0537-001

② XB0537-001, X76670-002

XB0537-001 is compatible with 1034D and M929D.

SA210 and X7667-002 are compatible with other models.

## Pearls and Sequins Foot

Attaches threaded pearls or beads on the edge of fabric. Can be used for string of 3 to 4 mm pearls and beads.

1. Retract the knife on your machine.
2. Set the machine setting, 3 thread overlock, stitch length to pearl size, stitch width to 3 mm from 5 mm, and adjust the tension.
3. Fold the fabric.
4. Align the edge of the fabric to the guide on the front of the foot.
5. Adjust the guide so that the needle moves down at the position of 1 to 1.5 mm from the folded edge.
6. Place the strings of pearls/beads onto the tunnel and then sew.



Party Bag



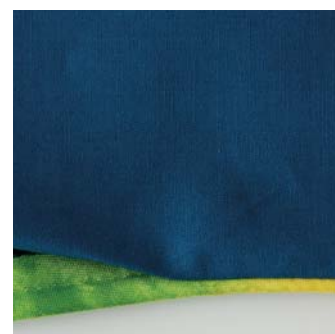
① SA210

② XB0241-101

## Piping Foot

Sews piping tapes with two pieces of fabric together. Ideal for edge decoration of bags, cushions, etc.

1. Set the machine setting, 3 thread overlock, stitch width at 5 mm, or 4 thread overlock, stitch width at 3 mm, stitch length to 3.
2. Place two fabrics inside out together and insert the piping tape between them.
3. Align them and set the core of the piping tape into the groove under the piping foot.
4. Sew and then open the fabrics.



① SA212

② X76663-001

## Taping Foot

Attaches tapes and elastic to stretch fabrics.

1. Set the machine setting, 3/4 thread overlock, stitch length to 3 - 4mm for tape attaching, 4 - 5mm for elastic tape attaching.
2. Place the tape/elastic tape into the tape guide and then under the foot.
3. Sew.

Note: When the fabrics gather, tighten the thread tension.

## Go for stretch fabrics!

Brother Cover Stitch is a great machine for sewing stretch fabrics. Using optional presser feet gives you more professional results.







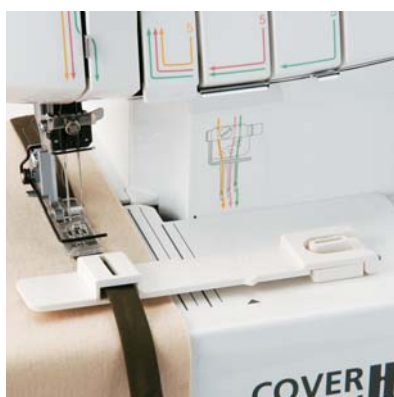
① SA223CV

② SA223CV: XB1305-001

## Belt Loop Guide

Use this guide to make belt loops or straps of 11 mm (1/2 inch) wide.

1. Set up your machine for 6 mm (approx. 1/4") wide two needles, three threads stitch.
2. Attach LC1 presser foot included in the machine.
3. Insert the tab on the belt-loop-sewing attachment into the front cover slot.
4. Make 25 mm (1") a fabric strap, and press 6 mm (approx. 1/4") of one side (lengthways).
5. Insert the fabric strap into the tape guide of the Belt Loop Guide.
6. Sew.



① SA222CV

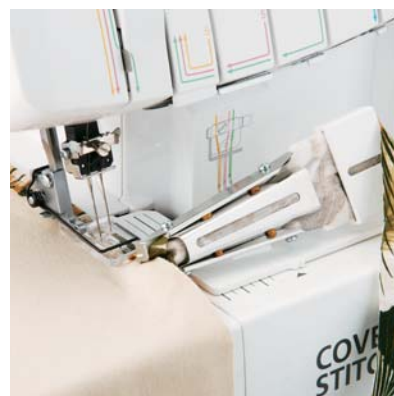
② SA222CV: XB1304-001

## Bias Tape Folder

Folds and attaches 12 or 12.7 mm (1/2 inch) wide bias tape.

You can use either self-made or store-bought bias tape.

1. Set up your machine for 6 mm (approx. 1/4") wide two needles, three threads stitch.
2. Attach LC1 presser foot included in the machine.
3. Insert the bias tape into the bias tape folder attachment.
4. Sew.



① SA225CV

② SA225CV: XB1307-001

## Double Fold Binder

Attaches 12 mm (approx. 1/2 inch) wide fabric tape as making it by folding 40 or 42 mm (approx. 1-1/2 inches) wide fabric.

1. Prepare a 40/42 mm (approx. 1-1/2") wide fabric tape.
2. Attach TB presser foot included in the machine.
3. Set the fabric tape through the folding binder, and set it under the presser foot.
4. Pull the fabric tape behind the presser foot.
5. Sew.



① SA224CV

② SA224CV: XB1306-001

## Bias Tape Binding Set

Attaches 6 or 12 mm (approx. 1/4 to 1/2 inch) bias tapes as folding them.

Attaching 6 mm (approx. 1/4") bias tape:

Use the small bias tape sliding plate with the LC2 presser foot.

Attaching 12 mm (approx. 1/2") bias tape:

Use the large bias tape sliding plate with the LC1 presser foot (included with your Cover Stitch).

1. Set up your machine for a chain stitch, the center needle.
2. Insert the tab on the bias tape attachment into the front cover slot.
3. Set the bias tape through the holder (cut the end of fabric pointed so that it is easily set through the holder).
4. Sew as holding the fabric lightly with a tweezers.



① SA221CV

② SA221CV : XB1303-001



## Hemming Set

Finishes hems easily and quickly. The stitches are always smooth.

1. Set up your machine for a cover stitch, with the LC1 presser foot included in the machine.
2. Attach the hem positioning plate A/B to the hemming attachment, and attach it to your machine.
3. Fold fabric and set it into the guide.
4. Sew.

Top Stitching Foot Set

## Top Stitching Foot Set

Use included presser foot to top stitch with 3 or 6 mm (approx. 1/8 or 1/4 inch) wide cover stitch.

1. Set T1/T2 presser foot.
2. Set up your machine for a cover stitch, with 3 or 6 mm wide.
3. Open the seams.
4. Align the fabric joint and the groove of the presser foot, and sew.



① SA226CV

② SA226CV : XB1308-001



Brother provides you with more ideas and information to inspire and help you with your creations!



## Innov-is Project Book

Project book for Innov-is I, 6000D, 4500D, 4000D/4000, 2500D, and 1500D/1500 users. Full of sewing and embroidering ideas!

Gives you ideas with instructions for more than 30 exclusive projects. It comes with 82 embroidery designs on a CD-ROM!

- ◆ Some embroidery projects from this "Innov-is Project Book" can be found on Page 8, 9, 18, 21, 23, 32, 34 and 38 on the catalog/catalogue.



## Brother Web Site

Visit our website for the latest information and tons of sewing ideas!

Visit our home sewing pages at [www.brother.com](http://www.brother.com).

You can find detailed information on Brother sewing machines, instruction manuals, useful sewing techniques and suggestions, upgrade program for your software or machines, and so much more for your happy sewing!



## 05-16

**Brother General Sewing Accessories**

Adjustable Zipper & Piping Foot	06
Blind Stitch Foot	07
Concealed Zipper Foot	07
Edge Joining Foot	08
Narrow Hemmer Foot	09
Non Stick Foot	09
Overlock Foot	10
Picot Foot	10
Seam Guide	11
Side Cutter	11
Stitch Guide Foot	11
Straight Stitch Foot	12
Straight Stitch Foot and Straight Stitch Needle Plate	12
Vertical Stitching Alignment Foot	12
Zigzag Foot (with leveling button)	13
Adapter for Low Shank	13
King Thread Spool Stand	14
Bobbins	15
Bobbins and Bobbin Clips	15
Thread Cassette	15
Wide Tables	16

## 17-24

**Brother Embellishment Feet**

Binding Foot	18
Braiding Foot	19
Clear-view Foot	19
Cording Foot	20
Cording Foot (5-hole)	20
Cording Foot (7-hole)	20
Fringe Foot	21
Gathering Foot	21
Open Toe Foot	22
Pearls and Sequins Foot	22
Pin Tuck Foot	24
Ruffler Foot	24

## 25-28

**Brother Quilting Feet**

1/4" Piecing Foot	26
1/4" Piecing Foot with Guide	26
Quilting Guide	26
Open Toe Quilting Foot	27
Quilting Foot	27
Walking Foot/Open Toe Walking Foot	28

## 29-38

**Brother Embroidery Accessories**

PE-DESIGN 8.0/UPG8	30
PE-DESIGN Lite	30
PED-BASIC	30
Innov-is I /6000D Embroidery Card Reader	31
Innov-is I /6000D Border Frame	31
Innov-is 4000D/4000 Premium Package	32
Innov-is 4500D/4000D/4000	
Premium Upgrade Package	33
Brother Embroidery Card Collection	34
Satin Finish Embroidery Thread Sets	35
Country Thread Sets	35
Bobbin Threads	35
Embroidery Frames	36
Free-Standing Ten Spool Thread Stand	37
Ten Spool Thread Stand	37
Stabilizer (rolled type)	37
Water Soluble Stabilizer	38

## 39-42

**Brother Sewing Machine Attachments for PQ Series**

Spring Action Guides	40
Gathering Foot	40
Heavyweight Foot	41
Very Narrow Foot	41
Bobbin for PQ Series	41
Needle Felting Attachment	42
Felting Needle	42

## 43-46

**Brother Serger/Overlock Feet**

Blind Stitch Foot	44
Gathering Foot	44
Pearls and Sequins Foot	45
Piping Foot	46
Taping Foot	46

## 47-50

**Brother Cover Stitch Feet**

Belt Loop Guide	48
Bias Tape Folder	48
Double Fold Binder	48
Bias Tape Binding Set	49
Hemming Set	49
Top Stitching Foot Set	50





# Notes

---

A series of horizontal dotted lines for writing notes.



# Notes

---

A series of horizontal dotted lines for writing notes.





# Notes

---

A series of horizontal dotted lines for writing notes.

Find more information at  
[www.brother.com](http://www.brother.com)

• The products shown in this catalog have been manufactured by Brother Industries, Ltd. under a licensing agreement with Disney Enterprises, Inc., through which Brother has permission to use Disney images.

All specifications are subject to change without notice.

Contact

**brother**®  
at your side

©2008 BROTHER INDUSTRIES, LTD. NAGOYA, JAPAN

All statements valid at time of printing. Brother is a registered trademark of Brother Industries, Ltd.  
Brand product names are registered trademarks or trademarks of their respective companies.

H8070038